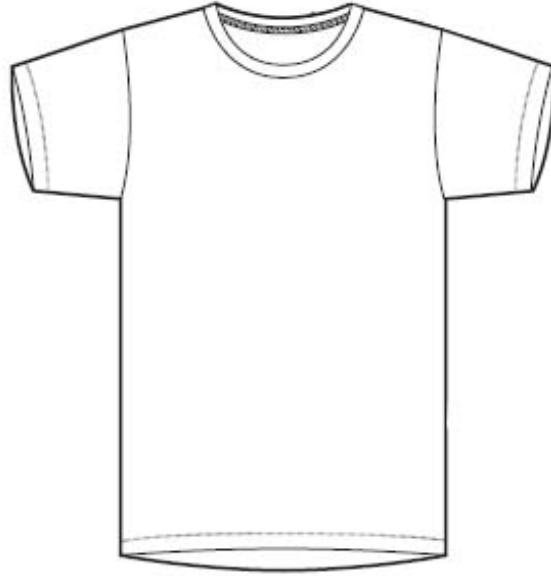


## MEASUREMENT SPECS FOR BASIC T-SHIRT



### Measurement Spec

Measurement Point	S	M	L	XL
1/2 Chest Width	44	46	48	50
1/2 Bottom Width	44	46	48	50
1/2 Waist	42	44	46	48
S.P. Length	62	63.5	64	64.5
Armhole depth msrd straight	25.2	26	26.8	27.6
Shoulder	9	9.5	10	10.5
1/2 Sleeve opening	15	15.5	16	16.5
Neck width inside	20	20.5	21	21.5
Neck drop Front	15	15.5	16	16.5
Neck drop back	1	1	1	1
Sleeve length	13	14	15	16
Neck riib width	1.5	1.5	1.5	1.5